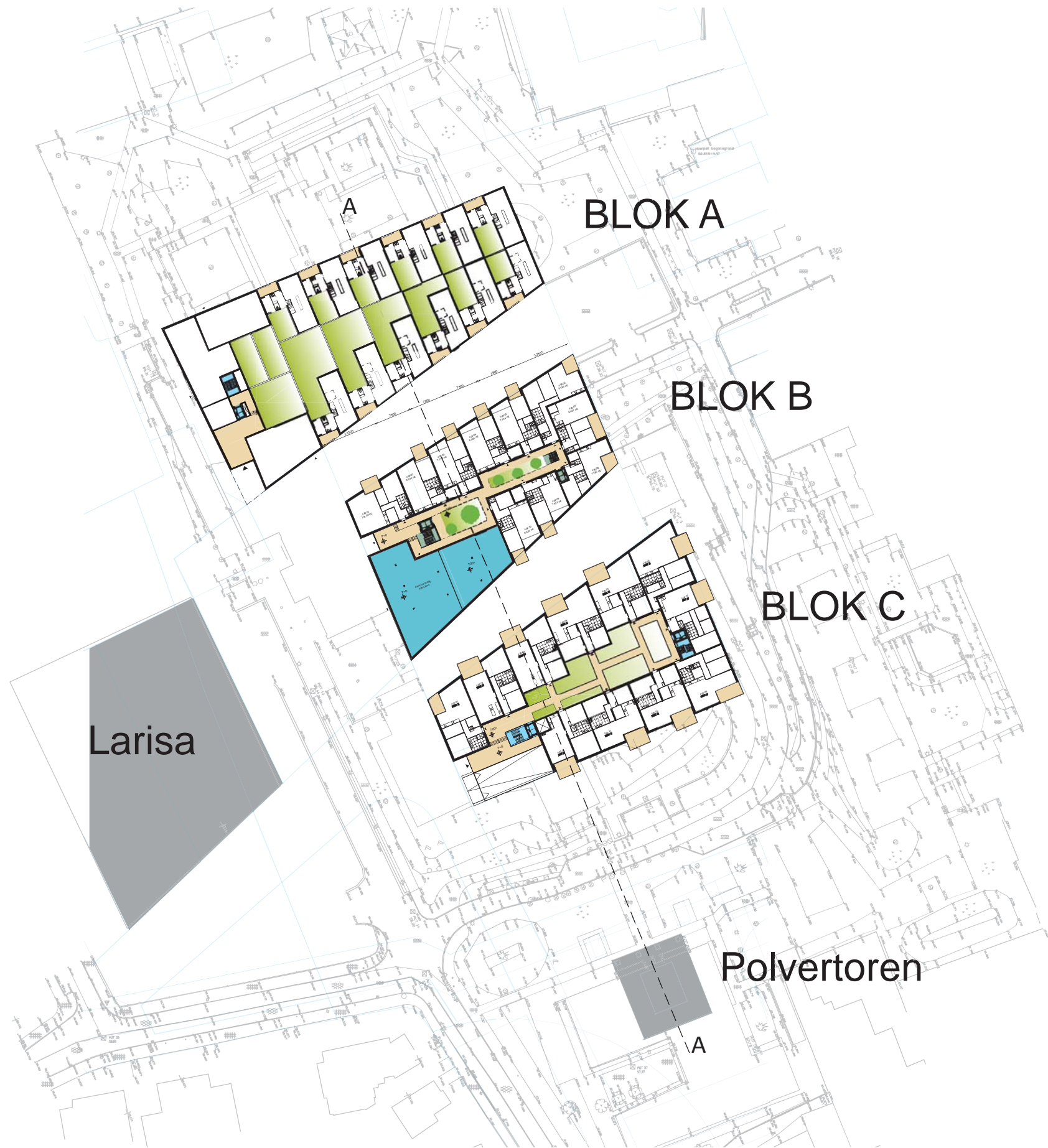


# OVERZICHT



BLOK A

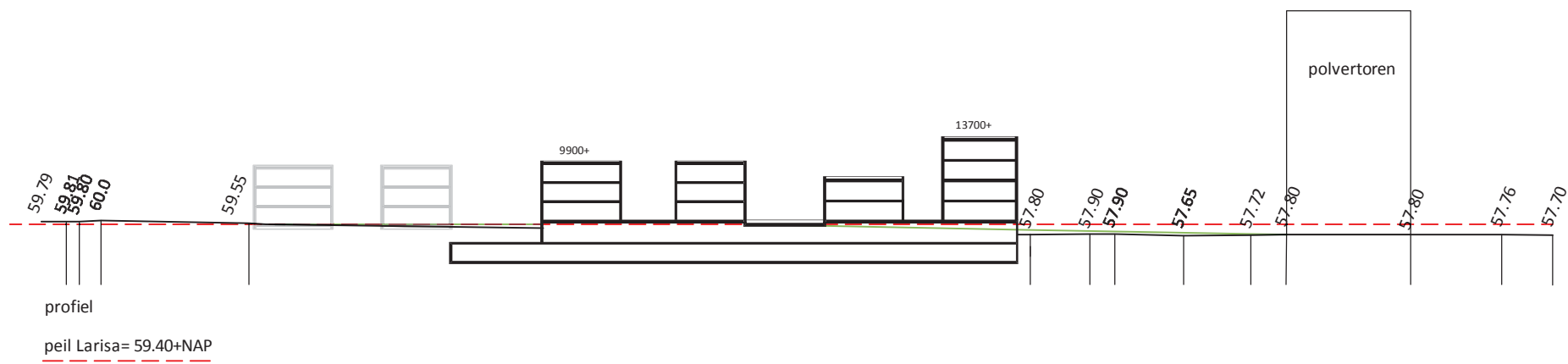
BLOK B

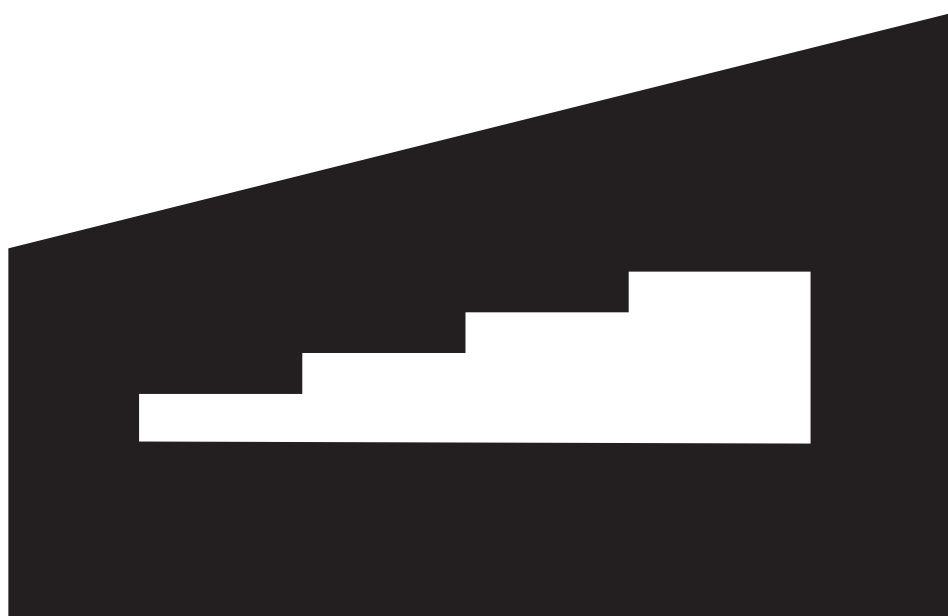
BLOK C

Larisa

Polvertoren

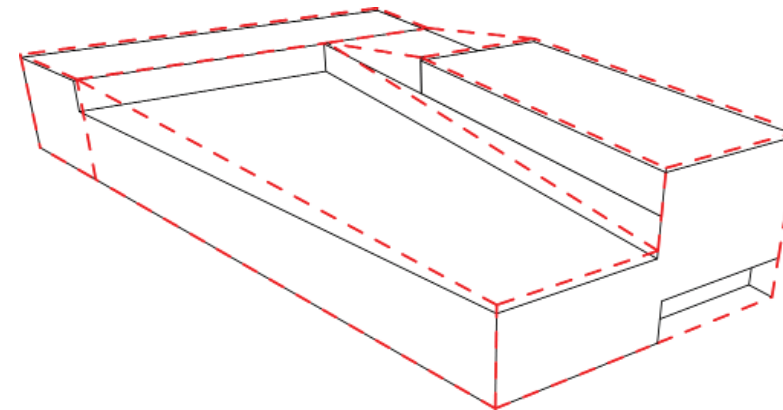
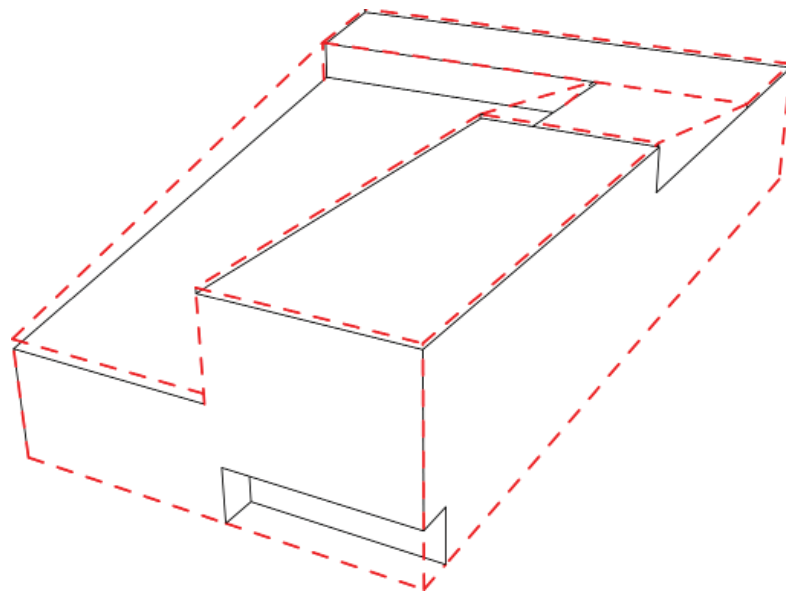
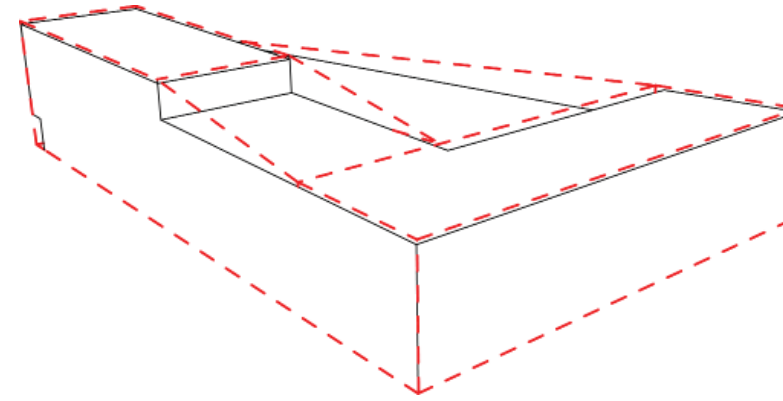
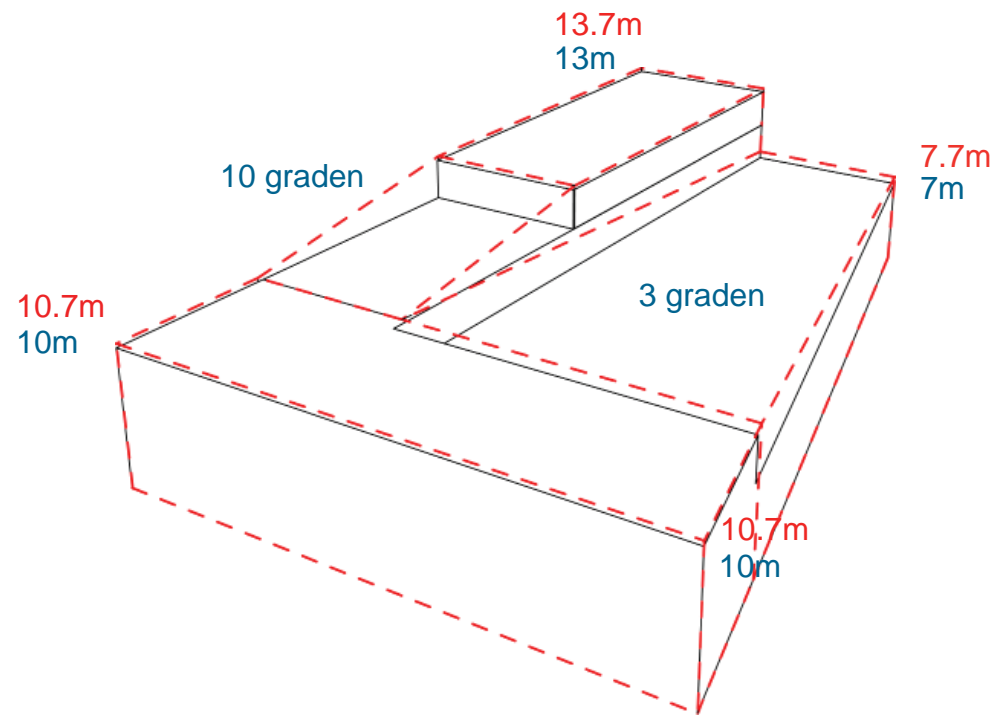






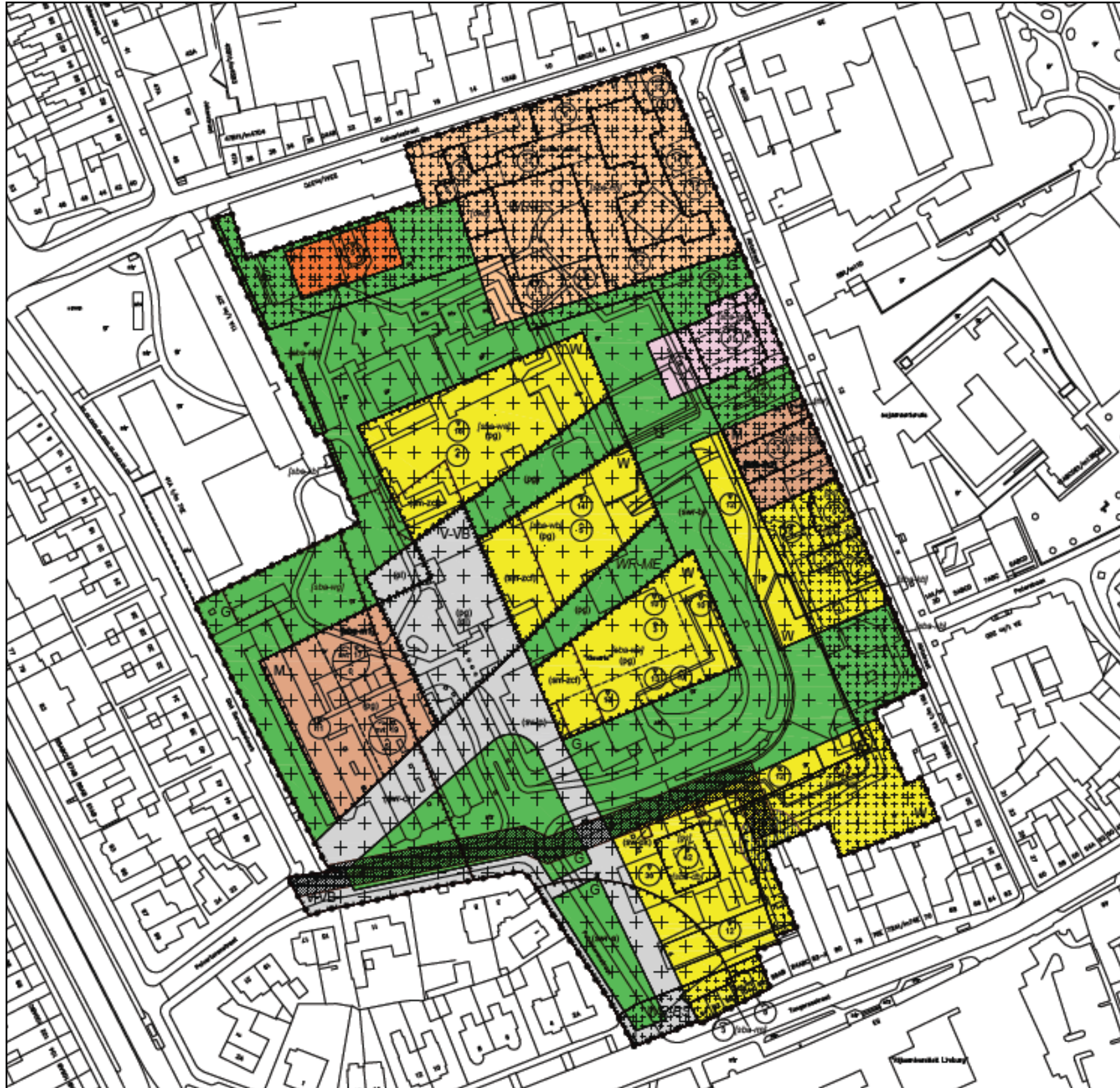


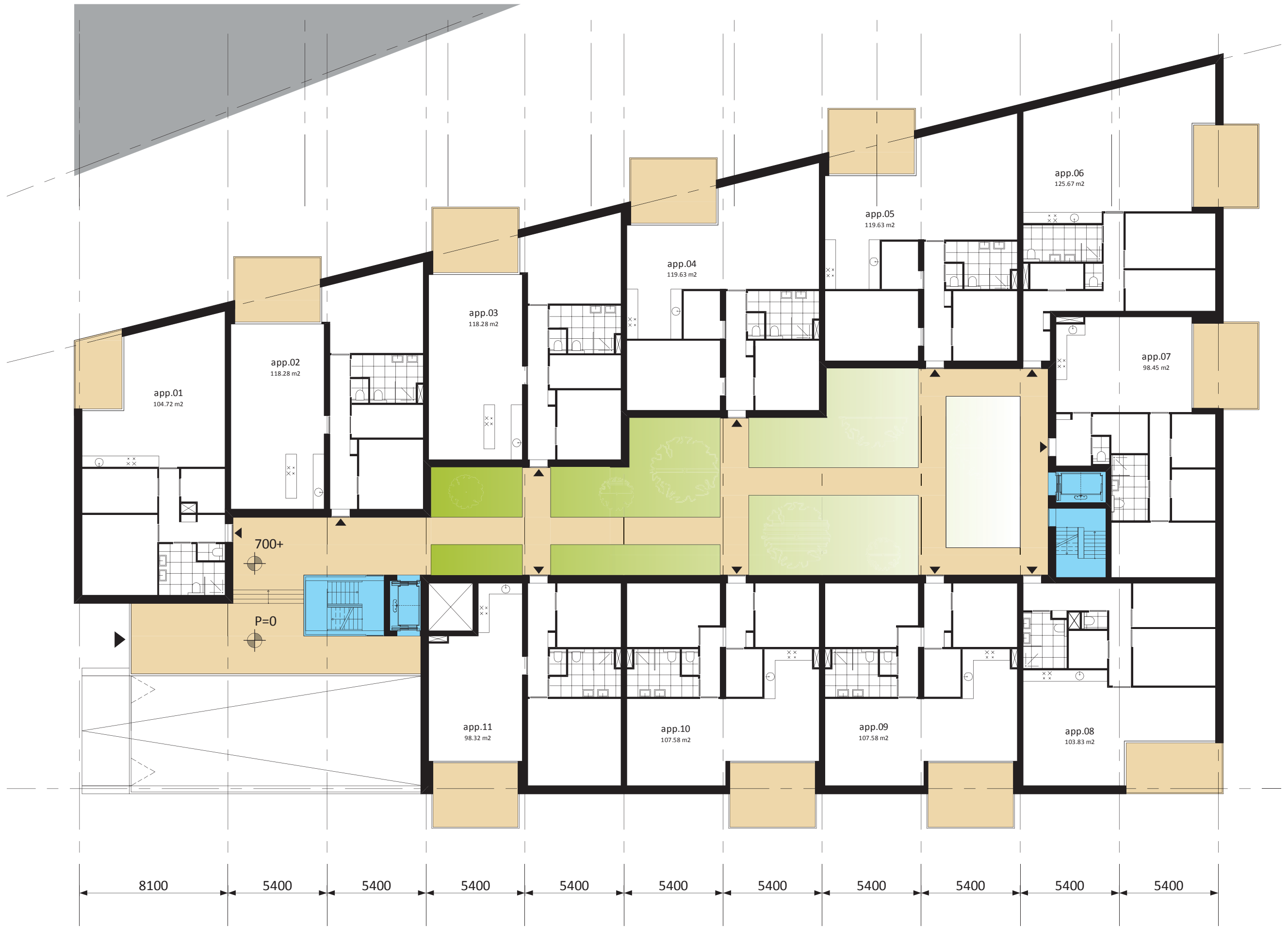
# BLOK C



uitgangspunt: afwijking bouwhoogtes met 10% is toegestaan  
maximale hoogtes: 7.70m, 10.70m, 13.70m, handhaving hellingshoek

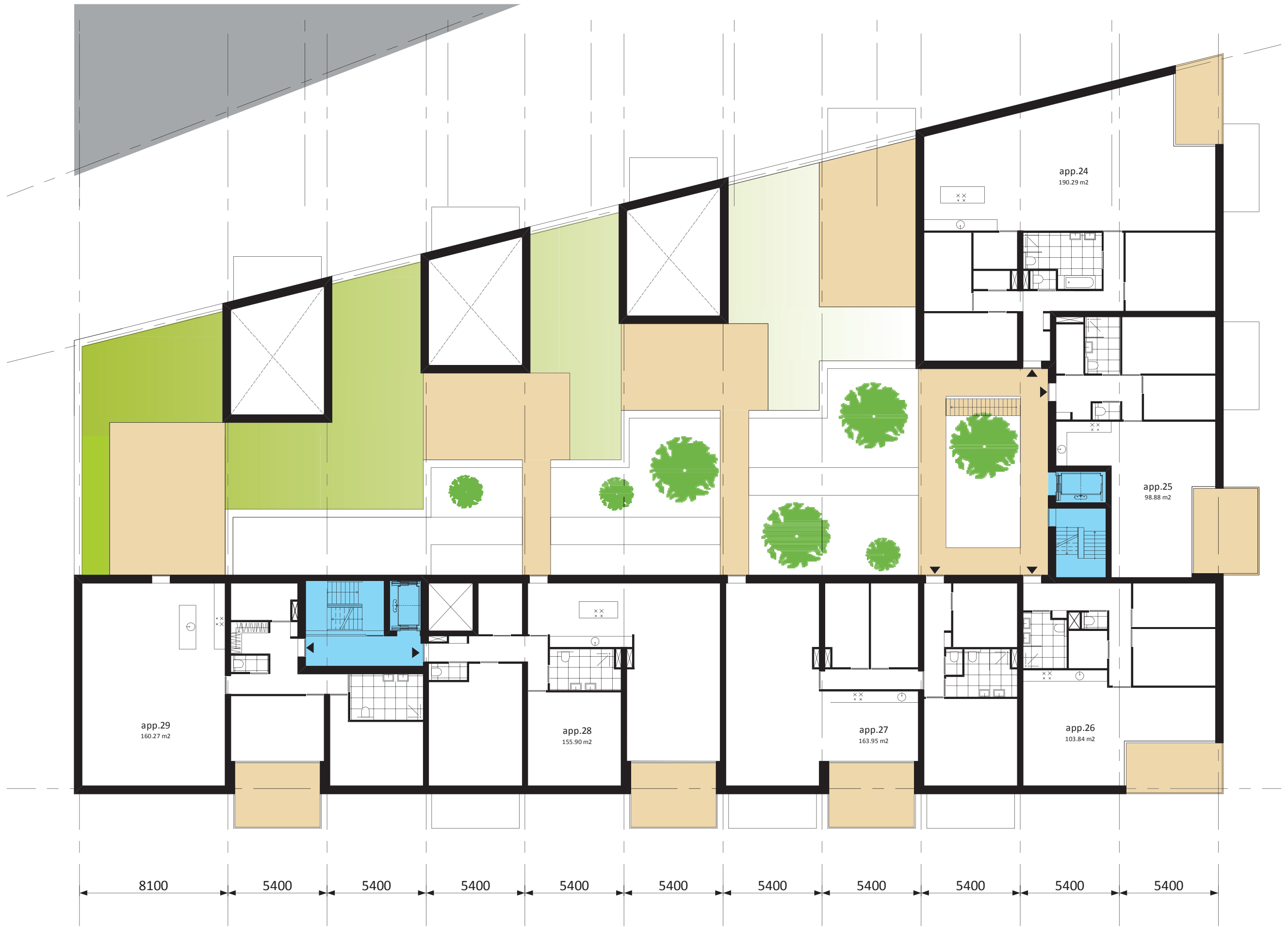








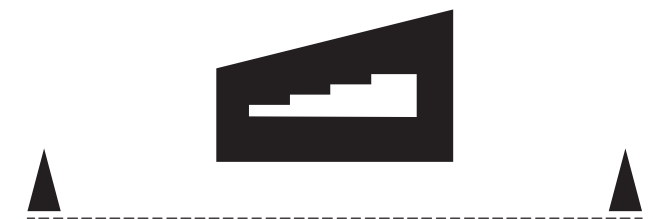


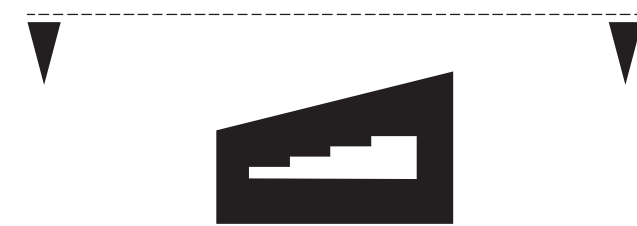


VERDIEPING 2 1:200



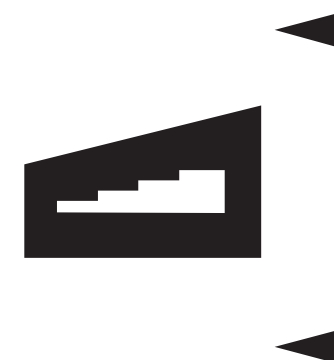


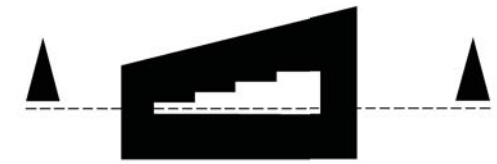


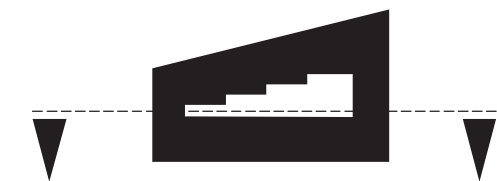




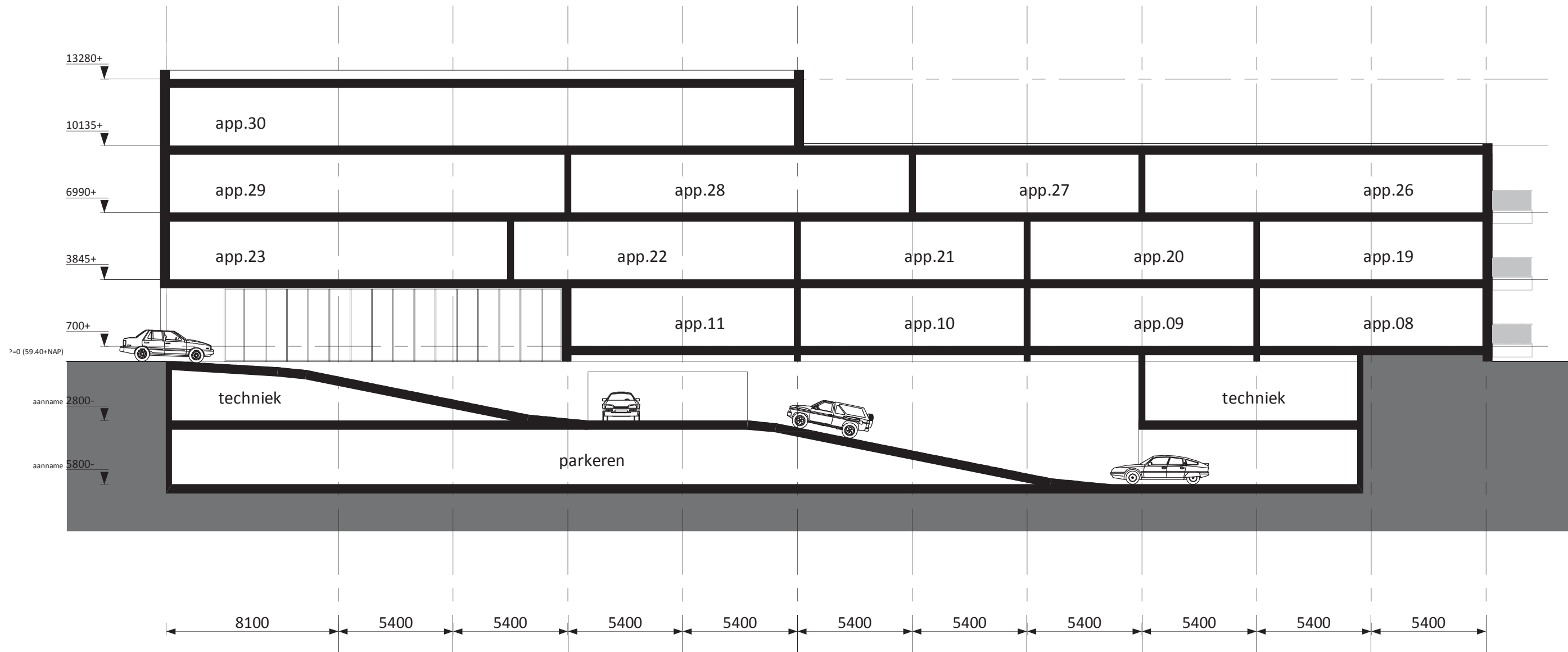




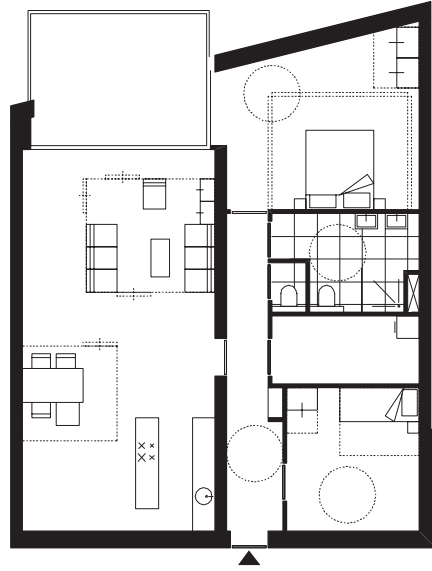








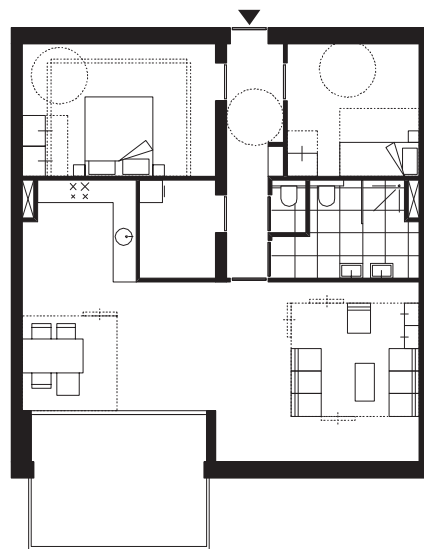
DOORSNEDE HELLINGBAAN 1:200



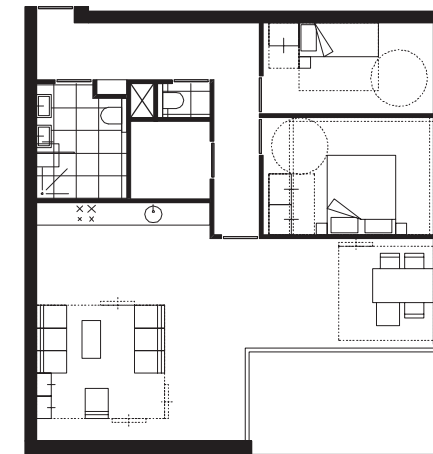
Principe indeling  
appartement 02,03,13,14,15 & 16



Principe indeling  
appartement 27 , van 2 naar 3 stramienen



Principe indeling  
appartement 09,10 ,20 ,21



Principe indeling  
appartement 08,19,26 hoekappartement





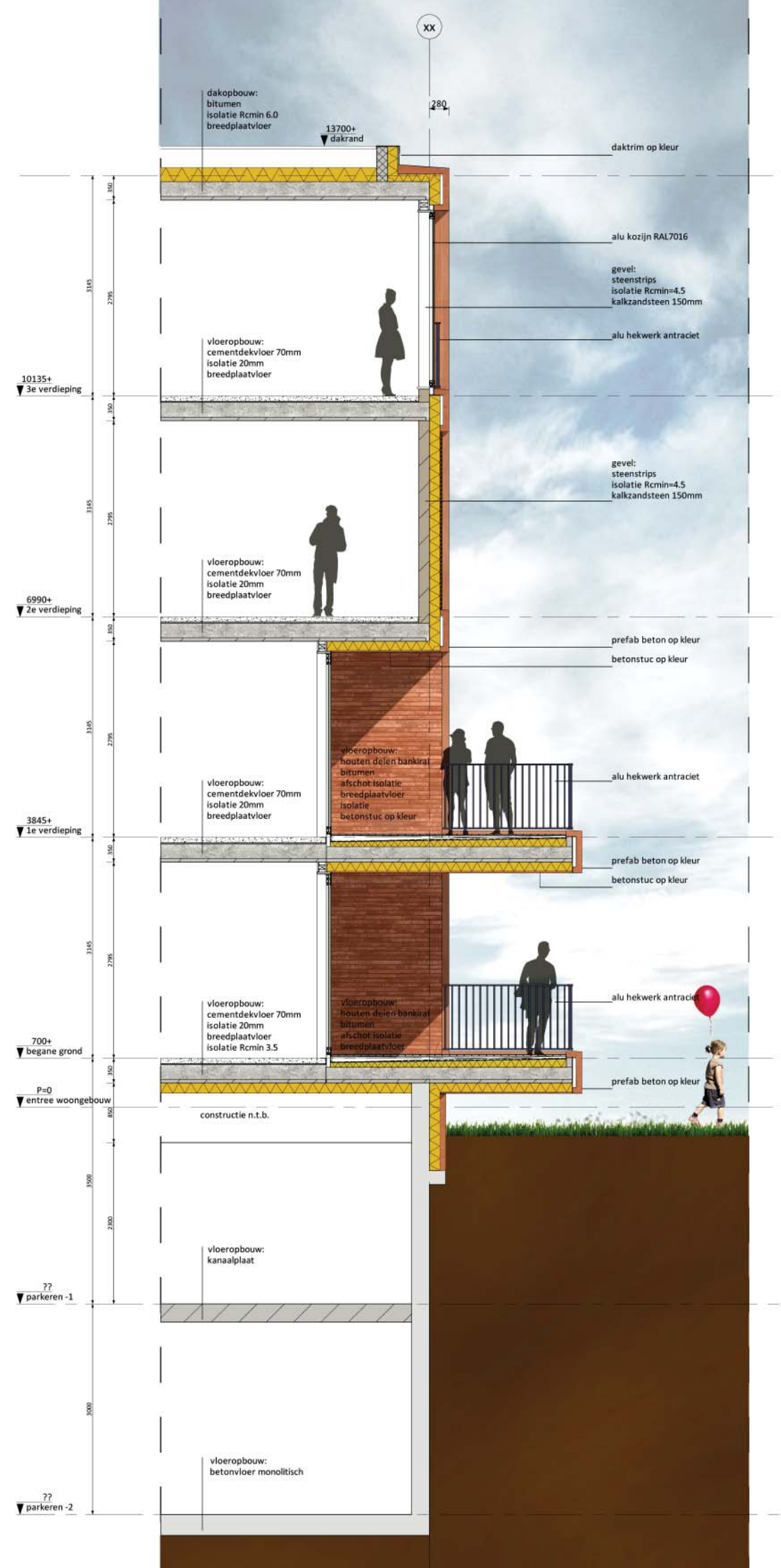
IMPRESSIE BINNENHOF





IMPRESSIE BINNENHOF





DETAILLERING PRINCIPES





## METRAGES

GO

<u>Begane grond</u>	<u>m<sup>2</sup></u>	<u>1e Verdieping</u>	<u>m<sup>2</sup></u>	<u>2e Verdieping</u>	<u>m<sup>2</sup></u>	<u>3e Verdieping</u>	<u>m<sup>2</sup></u>
Appartement 01	104	Appartement 12	121	Appartement 24	190	Penthouse	280
Appartement 02	118	Appartement 13	118	Appartement 25	99		
Appartement 03	118	Appartement 14	118	Appartement 26	104		
Appartement 04	120	Appartement 15	118	Appartement 27	164		
Appartement 05	120	Appartement 16	118	Appartement 28	156		
Appartement 06	126	Appartement 17	122	Appartement 29	160		
Appartement 07	98	Appartement 18	99				
Appartement 08	104	Appartement 19	104				
Appartement 09	108	Appartement 20	107				
Appartement 10	108	Appartement 21	107				
Appartement 11	98	Appartement 22	120				
		Appartement 23	129				
						TOTAAL	
						<u>3758m<sup>2</sup></u>	

## METRAGES

BVO

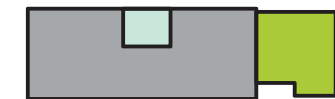
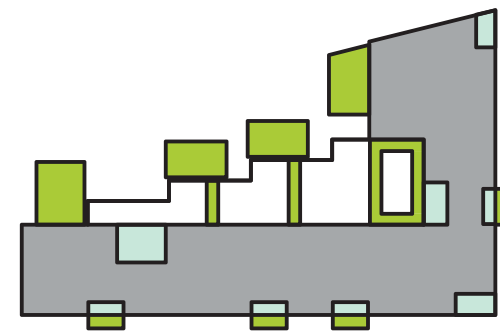
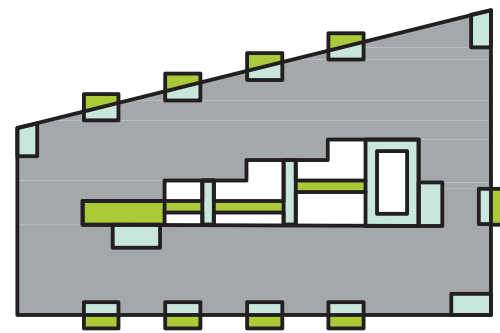
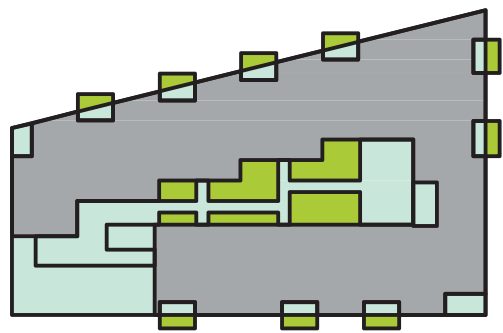
<u>Verdieping</u>	<u>BVO</u>	<u>Overdekt BR.</u>	<u>Onoverdekte BR.</u>
Begane grond	1386	498	229
1e Verdieping	1564	145	215
2e Verdieping	1000	107	276
3e Verdieping	329	31	108

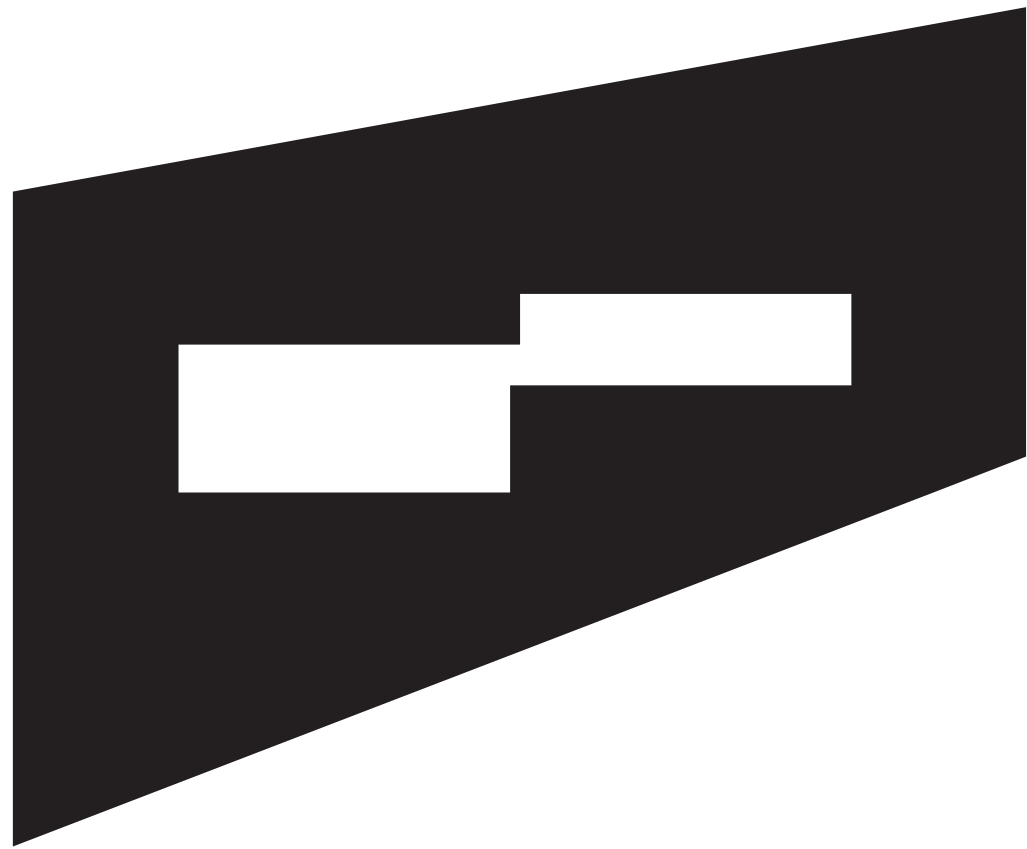
TOTAAL

4297m<sup>2</sup>

781m<sup>2</sup>

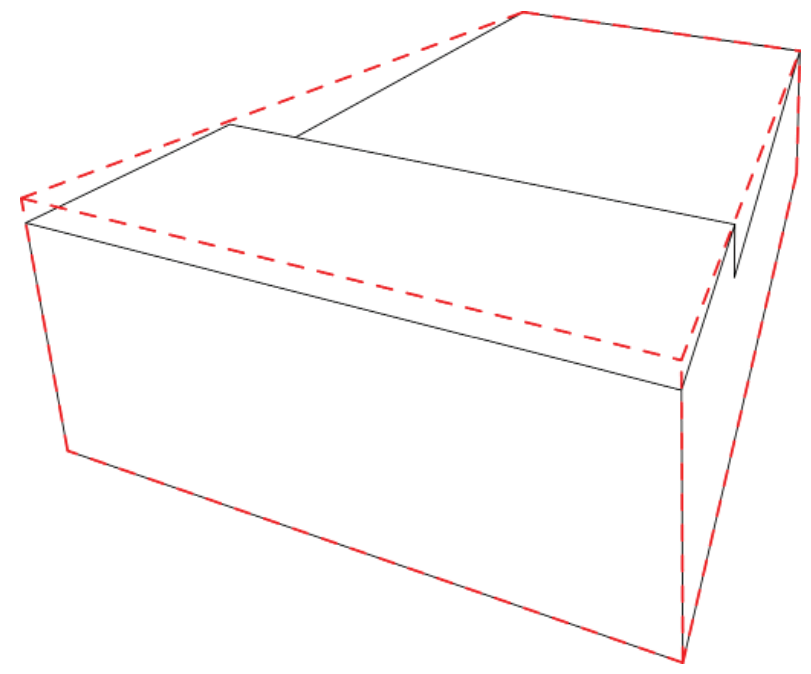
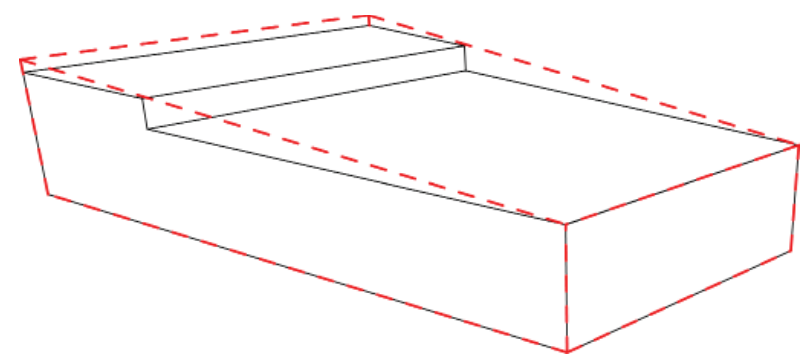
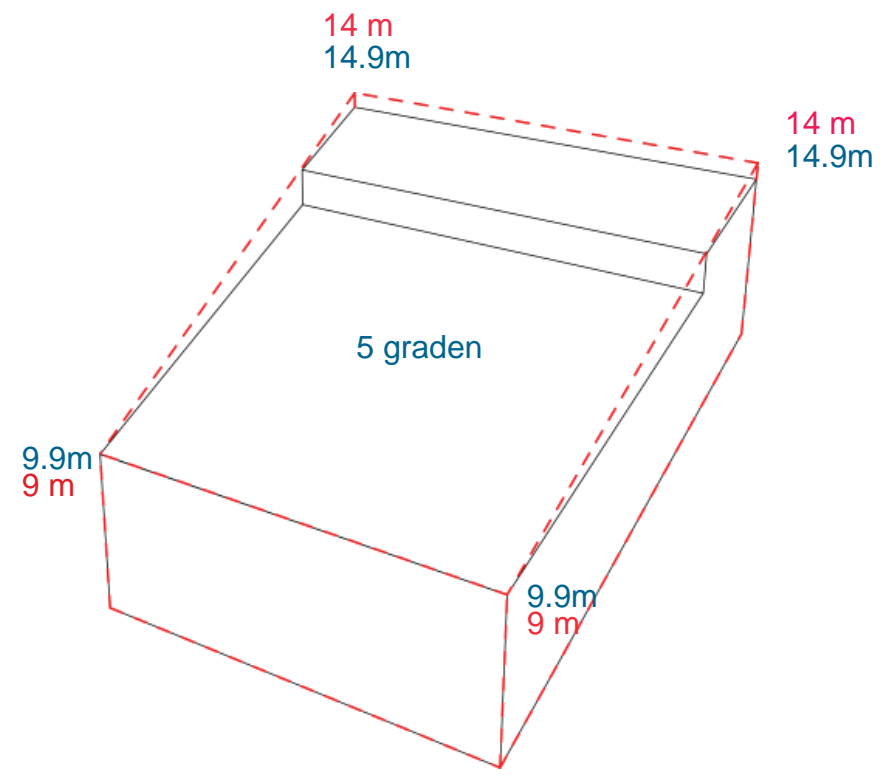
828m<sup>2</sup>





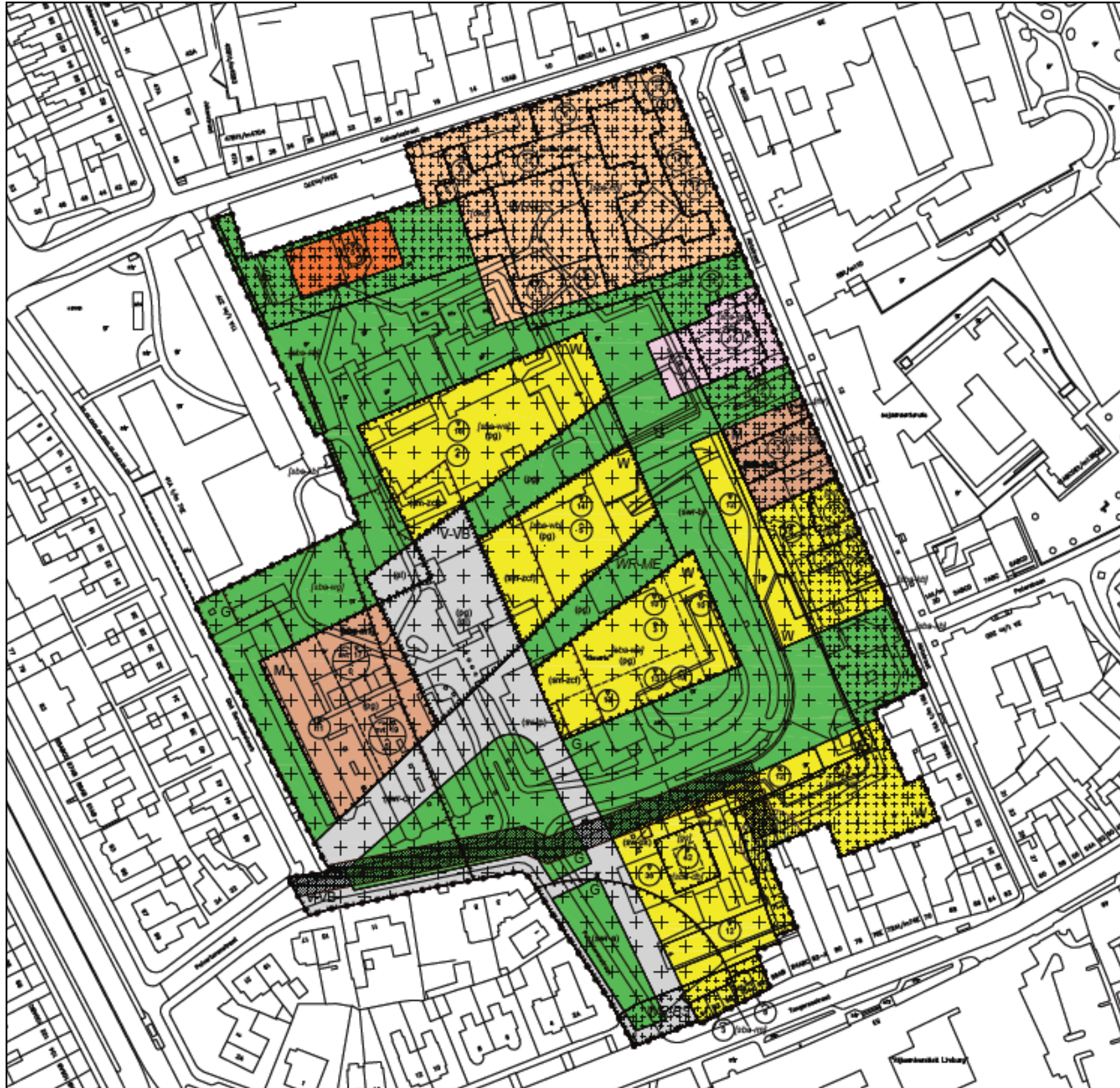
# BLOK B





uitgangspunt: afwijking bouwhoogtes met 10% is toegestaan  
maximale hoogtes: 9.90m, 14.90m, handhaving hellingshoek







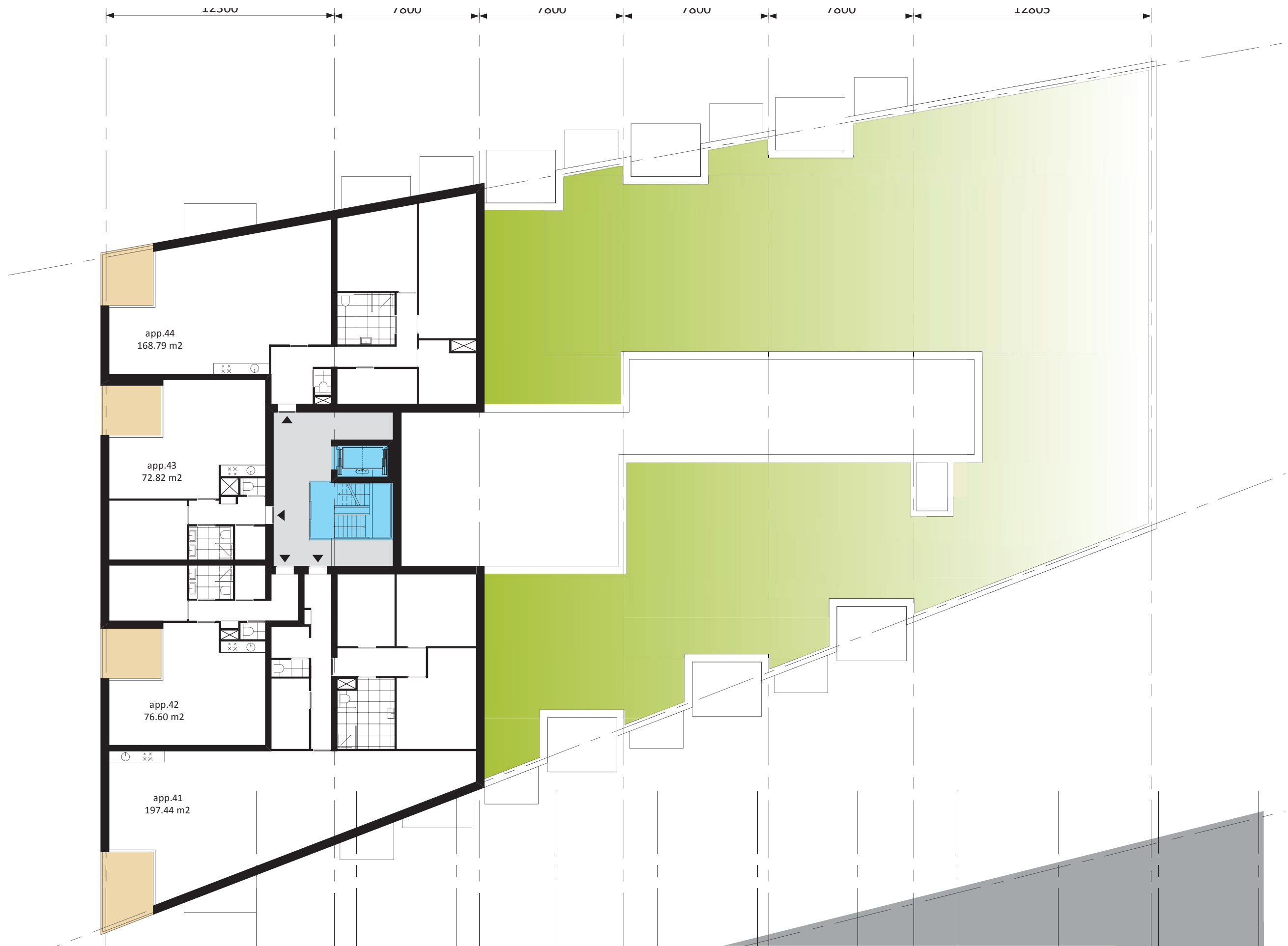






VERDIEPING 2 1:200



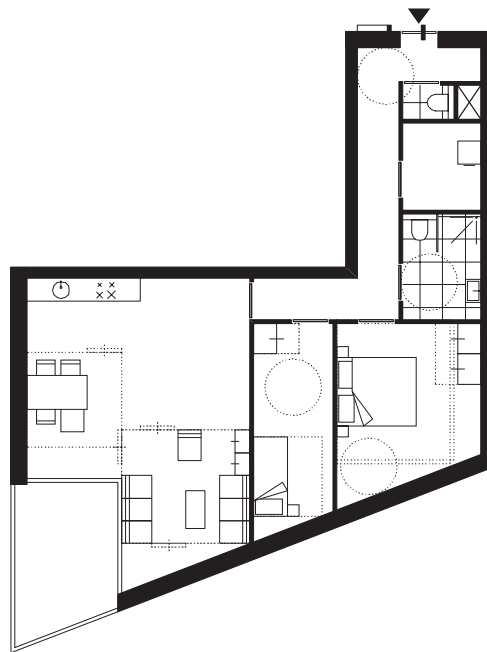


VERDIEPING 3 1:200



BEGANE GROND / ALTERNATIEF DIENSTVERLENING 1:200

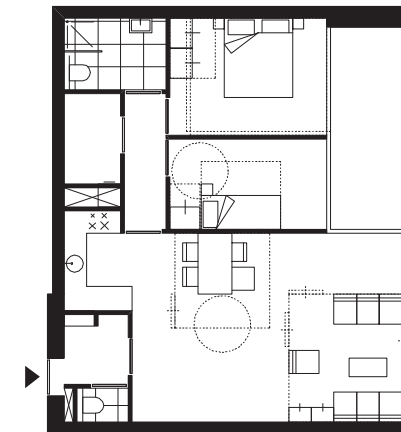




Principe indeling  
appartement 23, 38, 44 & 49



Principe indeling  
appartement 09 & 10, 21 & 22, 34 & 35



Principe indeling  
appartement 7, 17 & 32



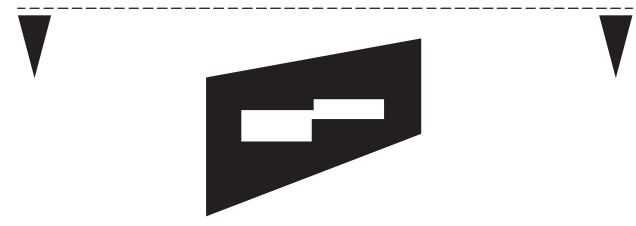


IMPRESSIE WONING

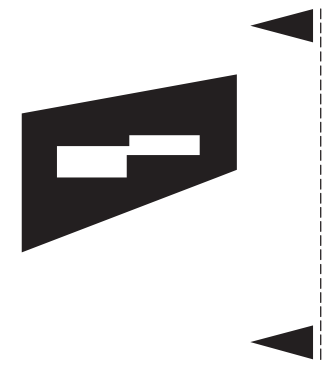




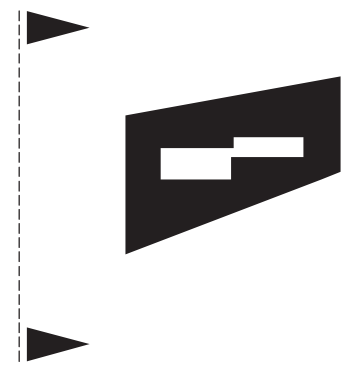
GEVEL ZUID-OOST 1:200



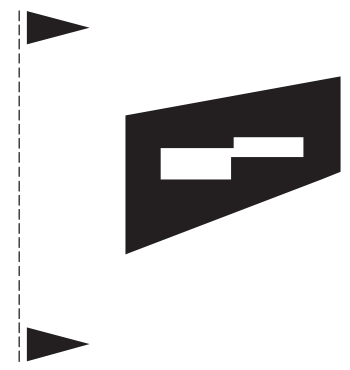
GEVEL NOORD-WEST



GEVEL NOORD-OOST 1:200

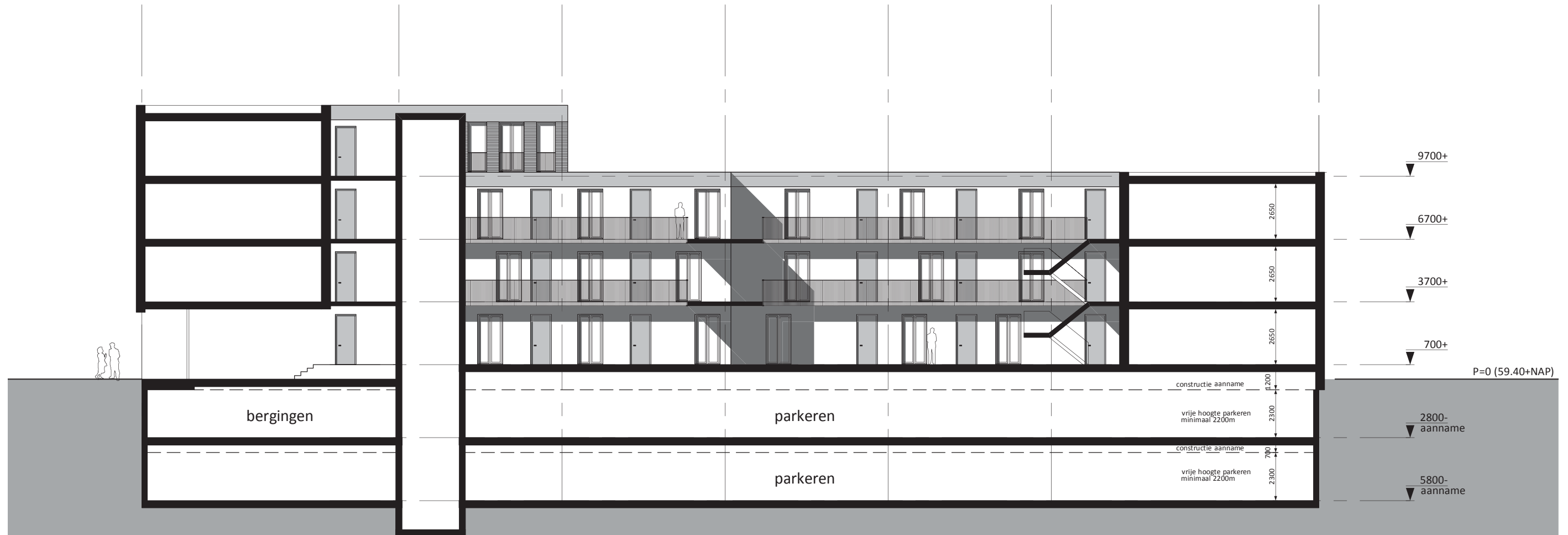
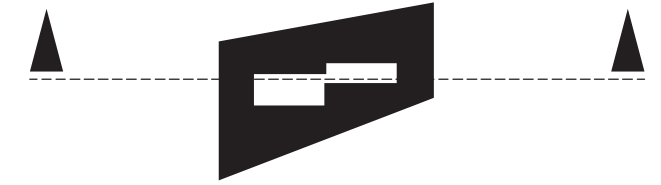


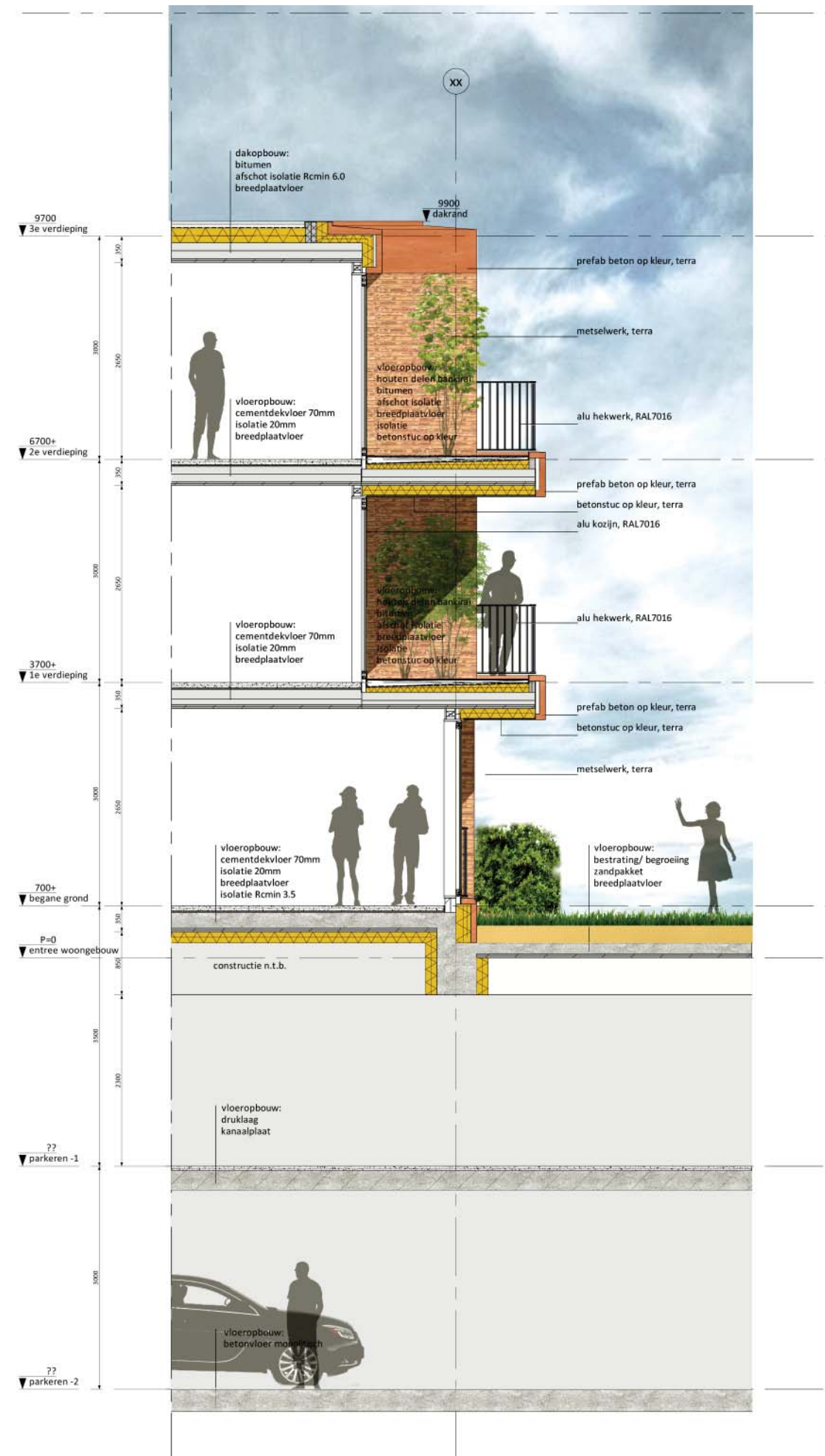
GEVEL ZUID-WEST



GEVEL ZUID-WEST VARIANT MET DIENSTVERLENING 1:200











## METRAGES

GO

<u>Begane grond</u>	<u>m<sup>2</sup></u>	<u>1e Verdieping</u>	<u>m<sup>2</sup></u>	<u>2e Verdieping</u>	<u>m<sup>2</sup></u>	<u>3e Verdieping</u>	<u>m<sup>2</sup></u>
Appartement 01	102	Appartement 11	85	Appartement 26	85	Appartement 41	197
Appartement 02	84	Appartement 12	82	Appartement 27	82	Appartement 42	77
Appartement 03	80	Appartement 13	79	Appartement 28	79	Appartement 43	73
Appartement 04	84	Appartement 14	82	Appartement 29	82	Appartement 44	169
Appartement 05	80	Appartement 15	79	Appartement 30	79		
Appartement 06	97	Appartement 16	97	Appartement 31	97		
Appartement 07	94	Appartement 17	94	Appartement 32	94		
Appartement 08	78	Appartement 18	76	Appartement 33	86		
Appartement 09	76	Appartement 19	74	Appartement 34	74		
Appartement 10	82	Appartement 20	80	Appartement 35	80		
Commerciele		Appartement 21	74	Appartement 36	74		
ruimte	410	Appartement 22	80	Appartement 37	80		
		Appartement 23	101	Appartement 38	101		
		Appartement 24	77	Appartement 39	77		
		Appartement 25	73	Appartement 40	73		
						TOTAAL	
						<u>4239m<sup>2</sup></u>	



## METRAGES

BVO

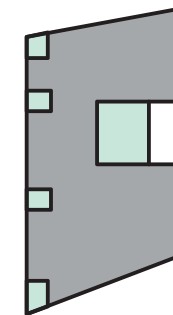
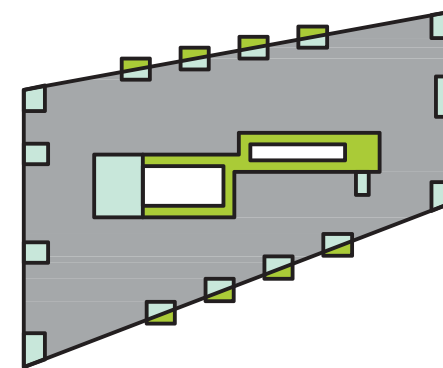
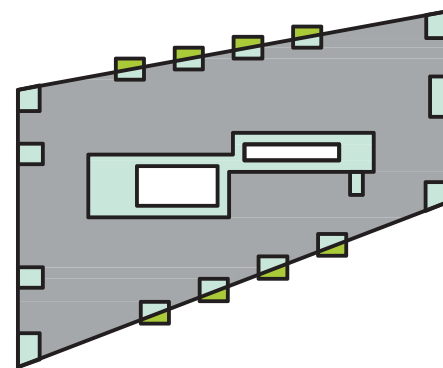
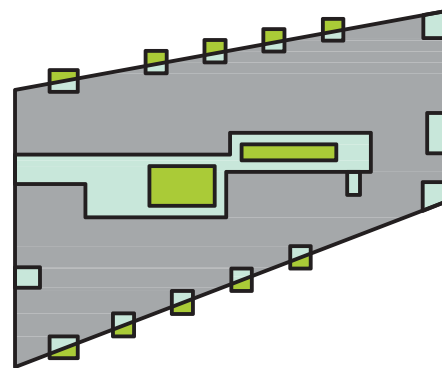
<u>Verdieping</u>	<u>BVO</u>	<u>Overdekt BR.</u>	<u>Onoverdekte BR.</u>
Begane grond	1387	303	117
1e Verdieping	1390	289	39
2e Verdieping	1390	175	154
3e Verdieping	584	94	0

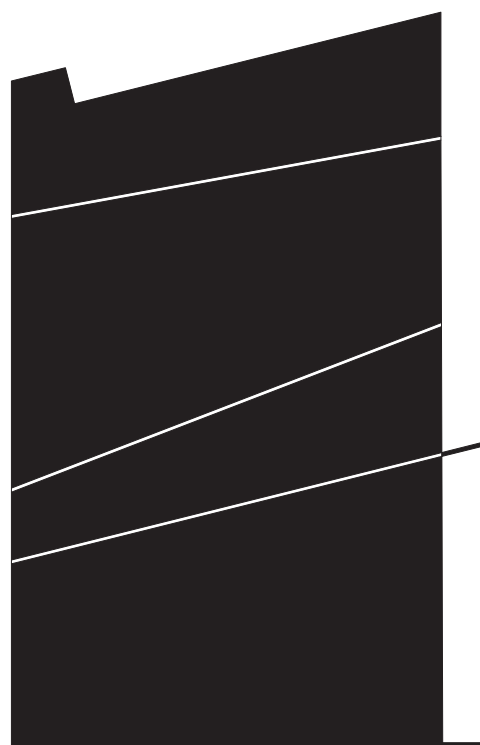
TOTAAL

4751m<sup>2</sup>

861m<sup>2</sup>

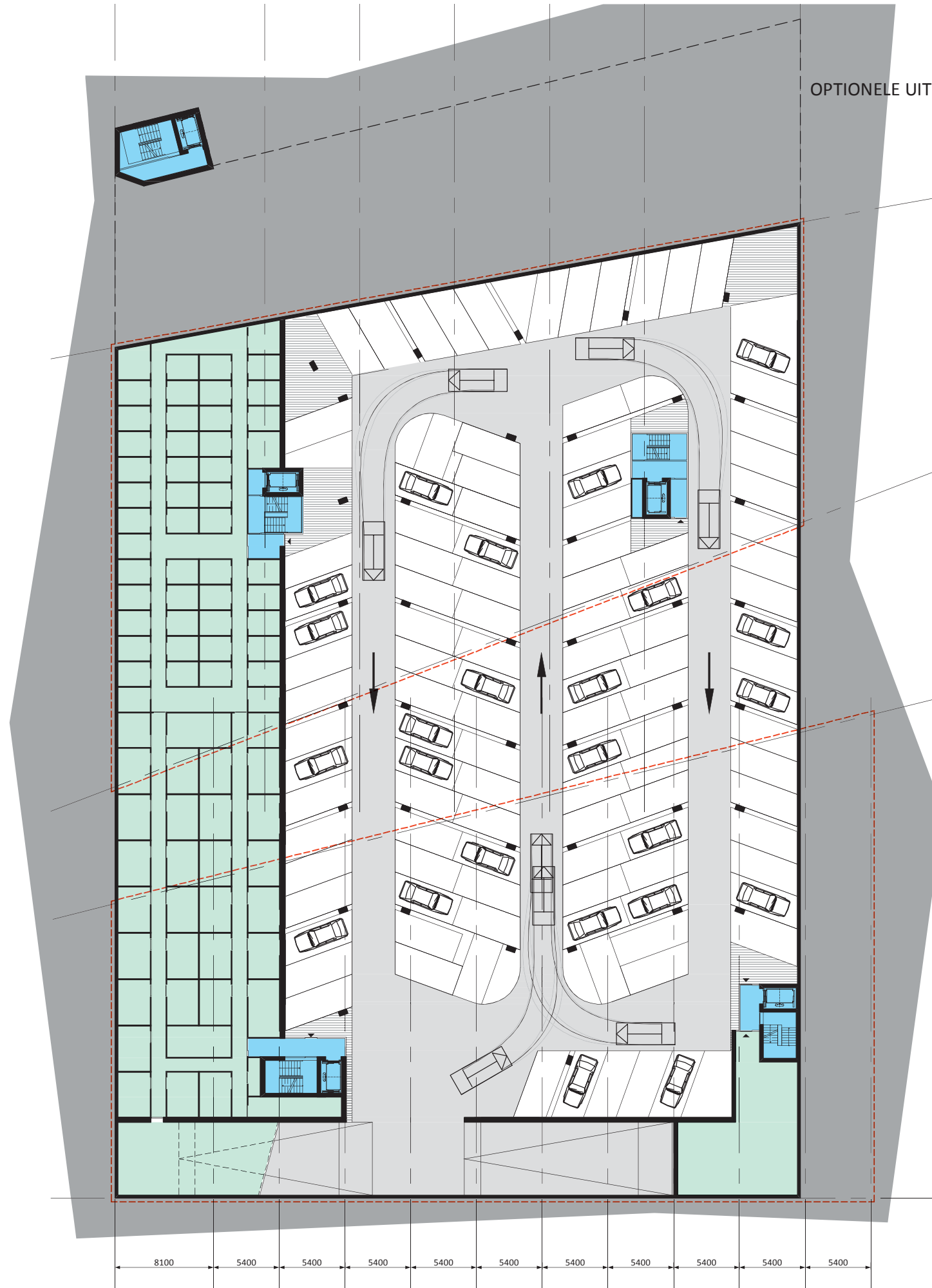
310m<sup>2</sup>





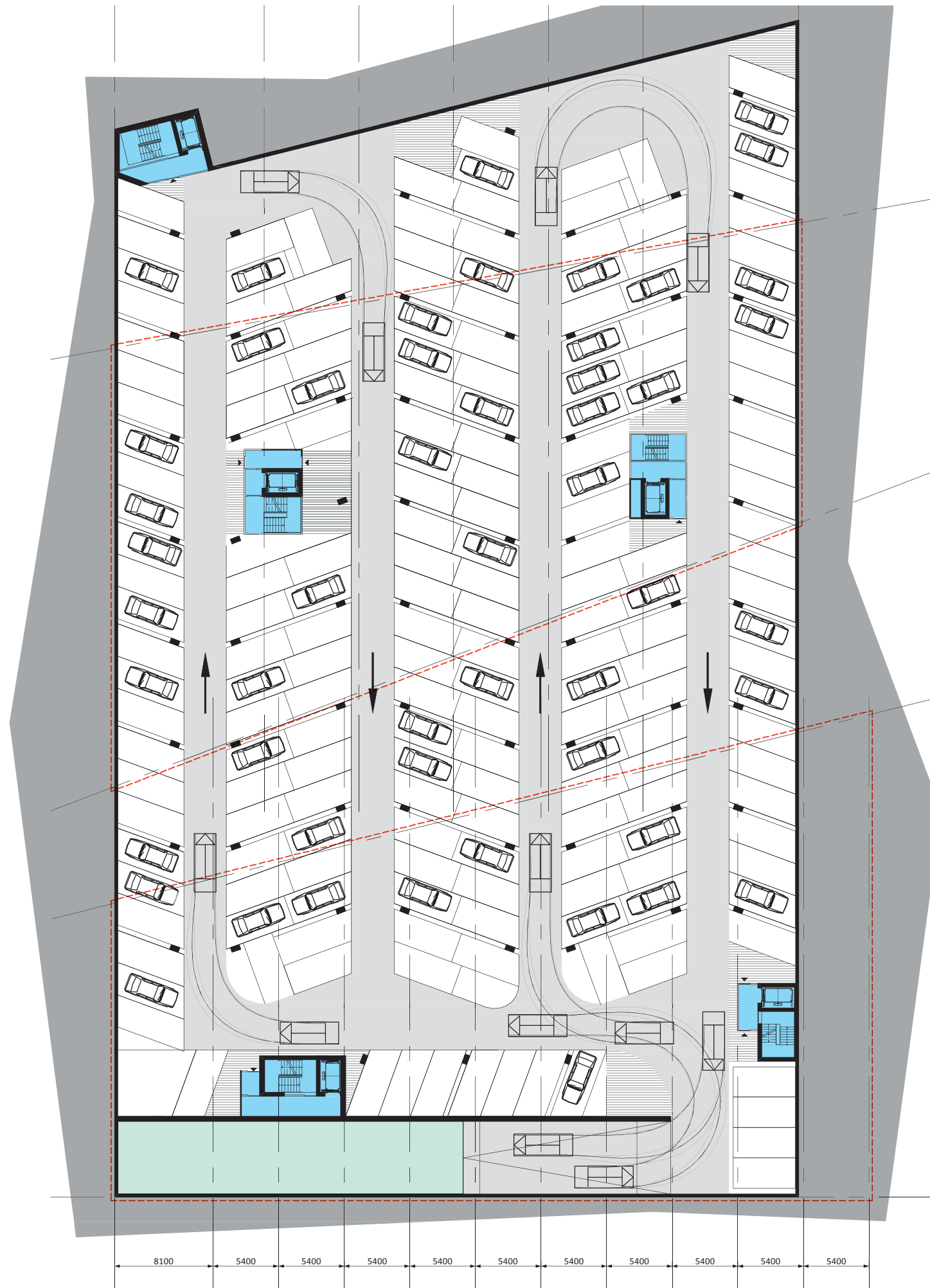
# PARKEREN

OPTIONELE UITBREIDING PARKEERLAAG -1

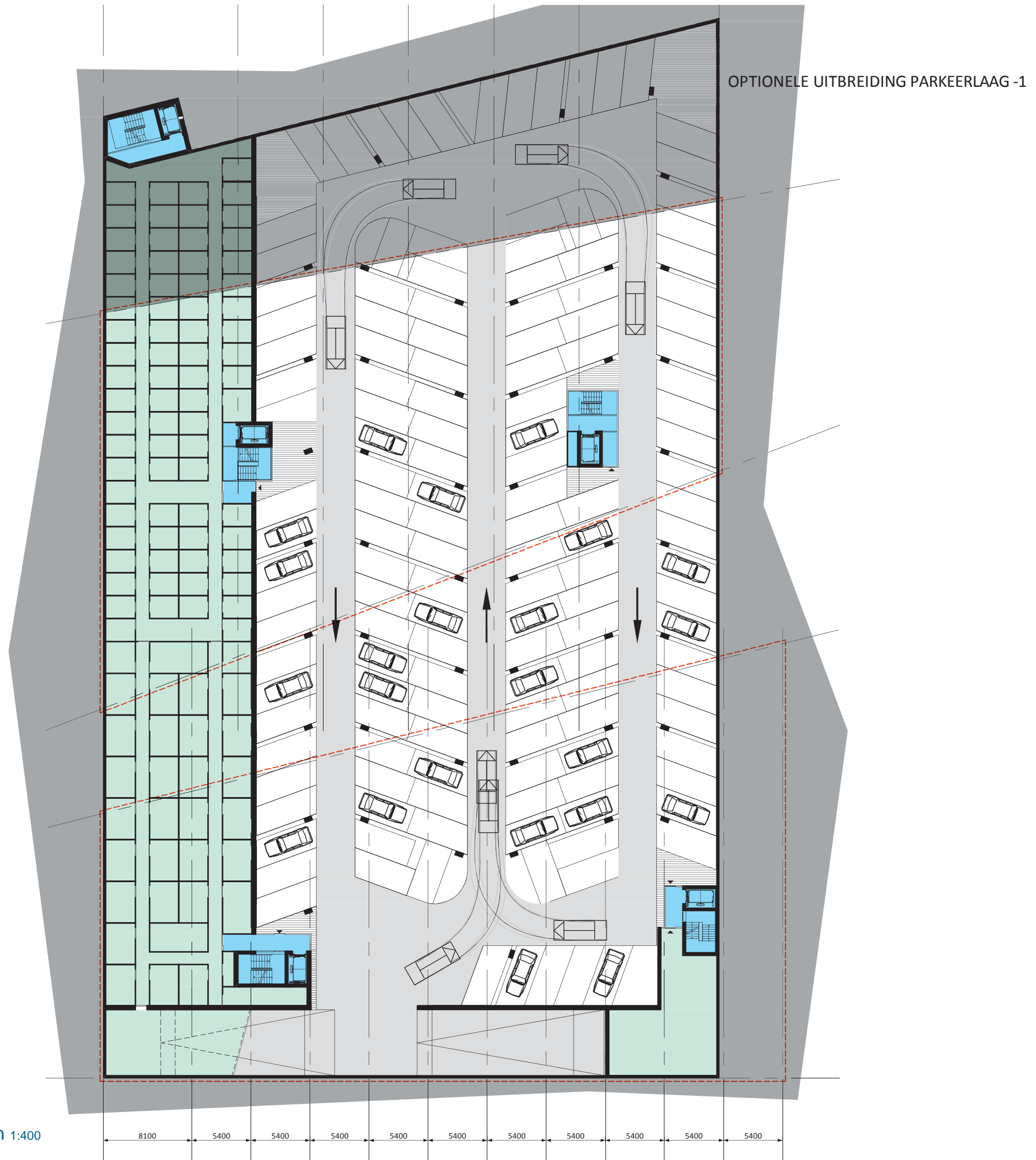


PARKEREN -1 1:400





PARKEREN -2 1:400



PARKEREN -1 extra parkeren 1:400

## METRAGES

<u>Verdieping</u>	<u>BVO</u>	<u>Parkeerplaatsen</u>
parkeren -1	4263	111
parkeren -2	5095	194
TOTAAL	9358	305

### Optionele uitbreiding parkeren -1

parkeren -1	5095	142
parkeren -2	5095	194
TOTAAL	10190	336





## COLOFON

Onderwerp : Klevarie Maastricht  
projectomschrijving : Voorlopig Ontwerp  
Projectnummer : 0253657

Datum : 08 DECEMBER 2016

Omschrijving	Team	PL	Validatie
Definitief	as   mw	mw	as



Wim Duisenbergplantsoen 21  
Postbus 959  
6200 AZ Maastricht  
+31 (0) 43 3253223

Beneluxweg 125  
Postbus 40  
4900 AA Oosterhout  
+31 (0)162 487500

info@croonenburo5.com  
www.croonenburo5.com

